



MEDIA RELEASE

OFFICE OF THE SHERIFF

ANDERSON COUNTY, TENNESSEE

SHERIFF PAUL N. WHITE

May 13, 2013

FOR IMMEDIATE RELEASE

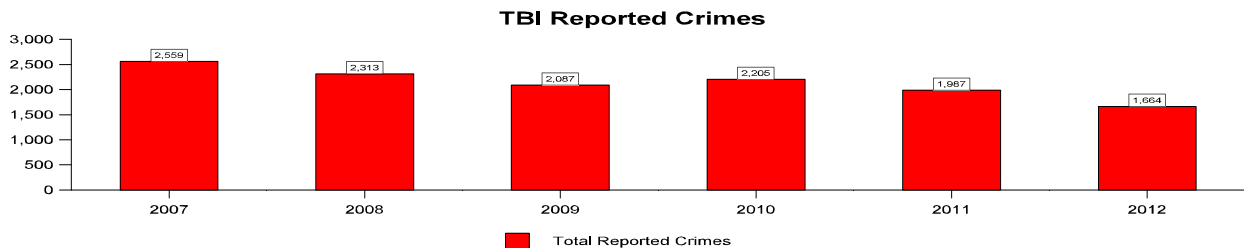
Operational Analysis - 2012

The Anderson County Sheriff's Department has completed an Operational Analysis showing statistics for the last ten years.

Some of the highlights include:

- Calls-For-Service - 16.87% From 2011
- Civil Process - 1.03%
- Criminal Warrants - 6.63%
- Total Arrests - 14.38%
- Total Reports Filed - 15.65%
- Total Reported Crimes - 15.40%
- Crimes Against Property - 15.82%
- Crimes Against Persons + 3.75%
- Jail Average Population + 6.46%

The overall number of crimes reported to the Sheriff's Department has decreased 24.53% in the last two years. From 2007 to 2012, overall crimes have decreased 34.97%. Crimes Against Property such as burglaries and thefts have decreased 19.78% over two years and 30.24% since 2007.



This drop in overall crime can be directly attributed to proactive law enforcement and increased patrols of the rural areas of the county.

Sheriff Paul White



**OPERATIONAL
ANALYSIS**

2012

**ANDERSON COUNTY
SHERIFF'S DEPARTMENT**

Sheriff Paul White

The Sheriff is an elected position as declared in the Tennessee constitution and as set forth in other state law. The Sheriff serves as the Chief Law Enforcement Officer of the county and administers his duties through deputies and assistants. The Sheriff's statutory duties include maintaining the peace, preventing crime, patrolling the county, serving civil and criminal process, waiting on the courts, and maintaining the jail. Other responsibilities, as outlined in the Tennessee Code Annotated, include crime reporting to the Tennessee Bureau of Investigation, fingerprinting and photographing arrestees, maintaining records of inmates in the county jail, maintaining inmates' health, assuring inmate safety, feeding inmates, and accounting for inmates jail time. The Sheriff also has many other statutory duties including transporting persons to mental health facilities and maintaining the sex offender registry. There are some 160 state laws that set forth the Sheriff's duties and responsibilities.

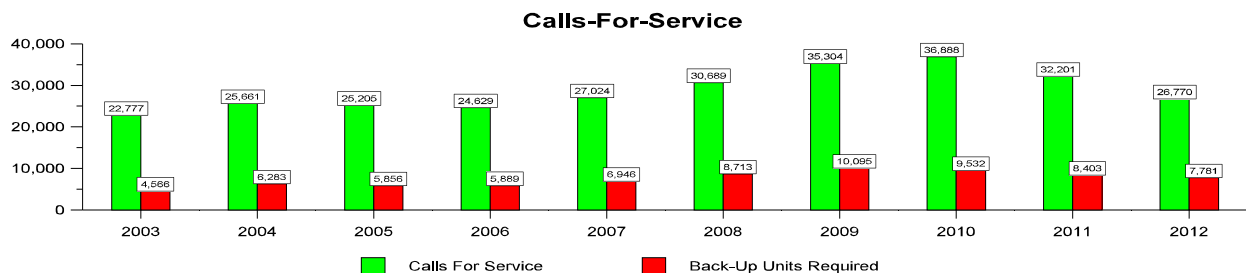
Over the last ten years, the workload of the Anderson County Sheriff's Department has increased substantially. From daily calls-for-service, cases handled by investigators, drug crimes, to transports for mental health evaluations, all areas of the department have seen an increase. From patrol, to the jail, to communications, these increases continue.

The Sheriff's Department has the responsibility to provide primary law enforcement services to the residents of Anderson County outside of the five municipalities. This includes not only patrolling the county roads and answering calls but investigating crimes and illegal activity. The Sheriff's Department is also responsible for assisting the municipal police departments when needed and providing many other law enforcement services.

The Sheriff is also responsible for maintaining the county jail, transporting prisoners, providing security to the courts, serving criminal warrants and civil process, and many other duties set forth by state law. While not well known, the majority of the duties of the Sheriff's Department are done countywide, in each of the cities, not just in the rural areas. In all of these areas, the workload has increased tremendously.

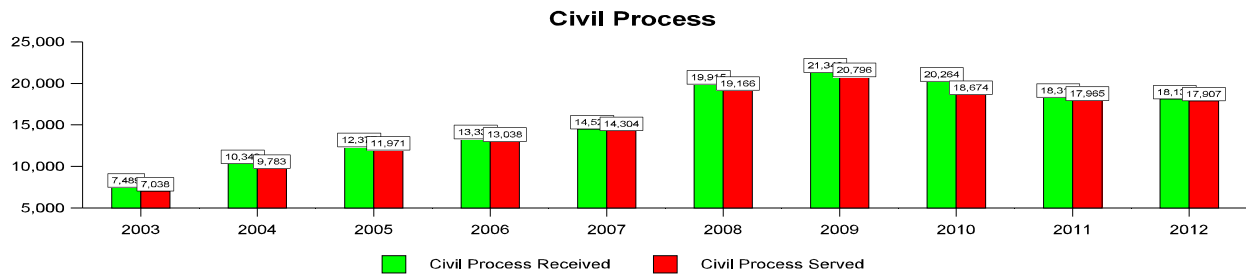
Calls-For Service

One of the primary functions of any law enforcement agency is to respond to citizen calls for assistance. Calls range from routine such as barking dogs and loud music; to reports of burglaries and thefts; to life-threatening calls such as robberies and shootings. In order to keep up with the call volume, there must be adequate staffing of patrol deputies. However, there must also be sufficient personnel to perform proactive patrols to prevent crime and not just simply respond after the fact.



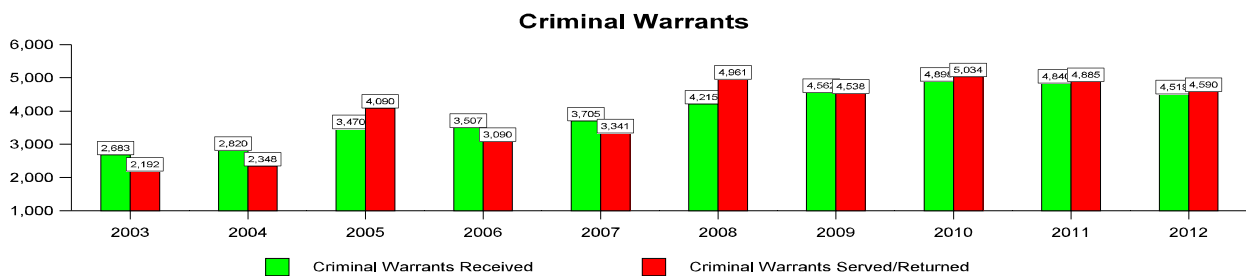
Civil Process

Other duties of the Sheriff's Department have also increased. Civil papers have decreased since 2009 but have risen by 150% in a ten year period.



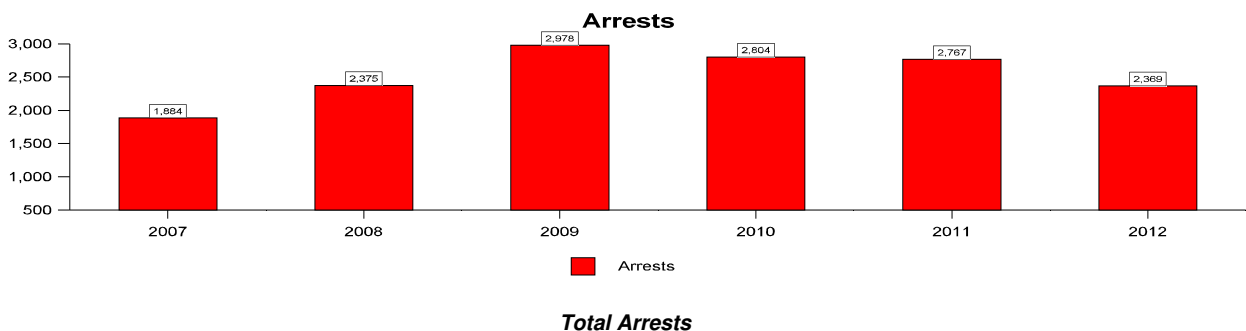
Criminal Warrants

Patrol deputies are responsible for serving arrest warrants but can find little time to do so. The backlog of unserved warrants has been reduced over the last few years but is still some 3,100 criminal papers with most of the new warrants being issued for probation violation and failure to appear in court. The number of criminal warrants issued has risen significantly in the last few years.



Arrests

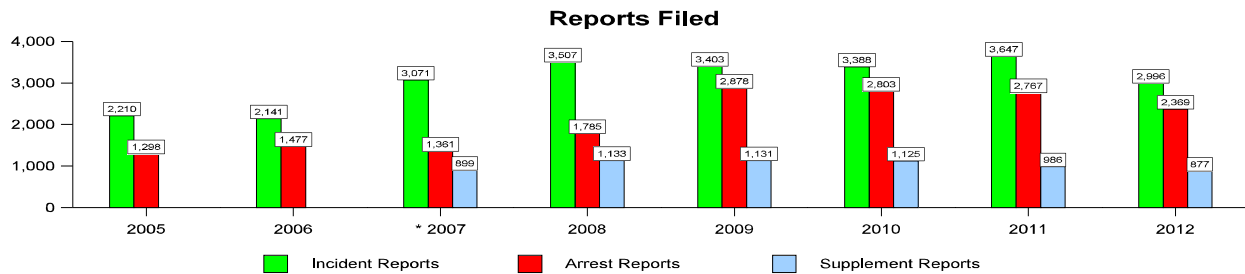
The total number of arrests by deputies has also risen over the last few years. These arrests include charges for other jurisdictions. Arrests on warrants for other counties are also included.



Overall arrests are down as crime reported is also down from 2009. Crimes reported to the TBI have decreased over the past two years.

Reports Filed

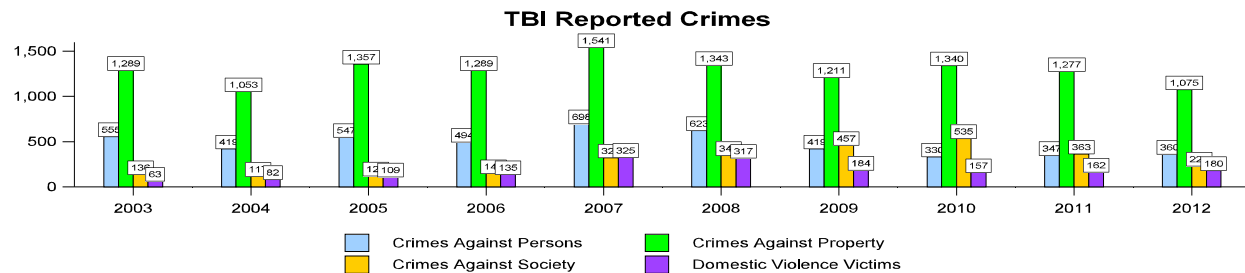
The number of reports filed by deputies continues to increase. A new computerized reporting system went online in 2007. This allowed more accurate tracking of reports, crimes, and arrests. The number of reports directly relate to the level of activity within the department.



Incident Reports and Arrest Reports have decreased as crimes reported have also decreased for 2012.

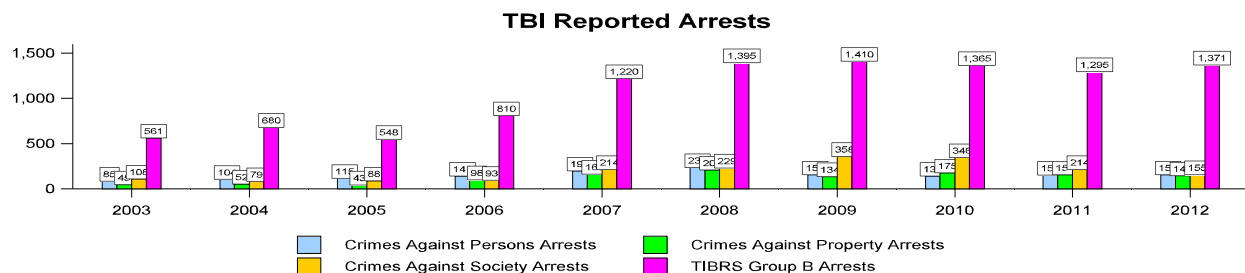
TBI Reported Crimes

Crimes in Anderson County are reported to the Tennessee Bureau of Investigation. These incidents may be from citizen reports or from officer initiated arrests.



TBI Reported Arrests

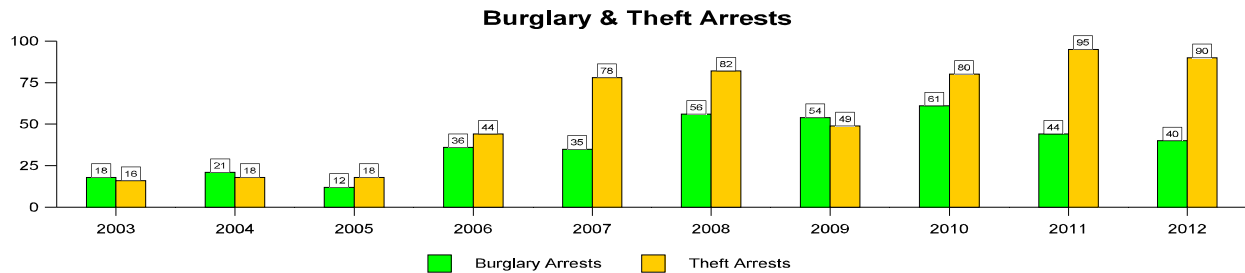
Arrests on crimes in Anderson County are also reported to the Tennessee Bureau of Investigation. Arrests may be from citizen reported crimes or initiated by sheriff's deputies. There has been a significant increase in arrests over the last five years.



TBI reported arrests are down as crime reported is also down from 2009. Crimes reported to the TBI have decreased over the past two years.

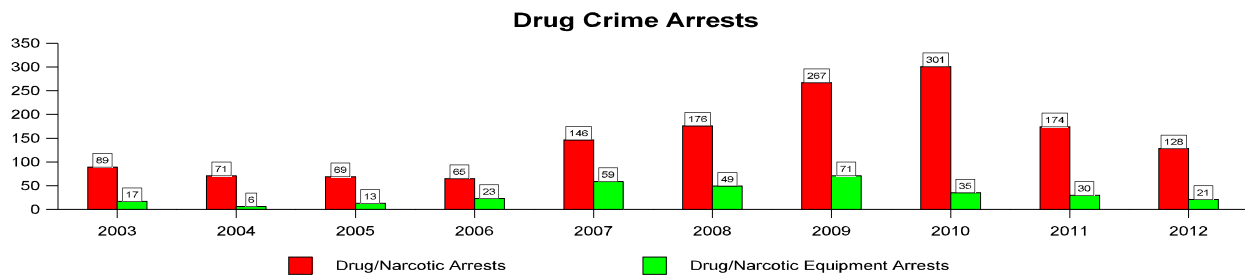
Burglary & Theft Arrests

Property offenses such as burglary and theft are the most prevalent types of crimes that occur in the rural areas of Anderson County. Over the last five years, emphasis has been placed on enforcement and investigation of these crimes. Increased staffing in 2007 and 2008 has allowed more proactive patrols of the rural areas as well as enhanced investigations of these offenses resulting in more arrests being made and crimes solved.



Drug Crime Arrests

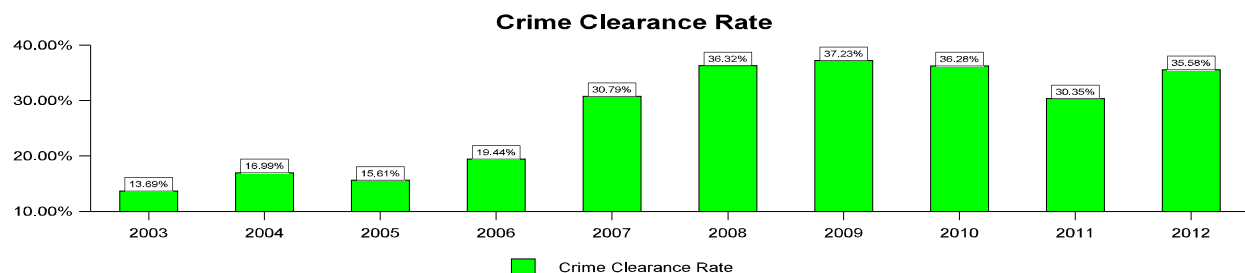
Drug enforcement is also a top priority of the department. Illegal drug activity touches every crime from bad checks to burglary. Most all burglaries and thefts are committed by drug offenders needing money to purchase drugs.



Drug arrests have decreased as many repeat offenders are now in jail or prison. This also reflects the decrease in property crimes.

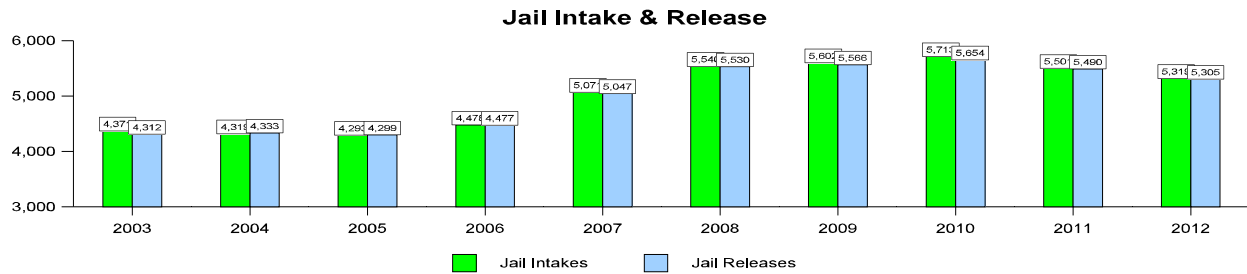
Crime Clearance Rate

Over the last four years, emphasis has been placed on enforcement and investigation of crimes reported to the department. Increased staffing in 2007 and 2008 has allowed more proactive patrols of the rural areas as well as enhanced investigations of offenses resulting in more arrests being made and crimes solved. In addition, the new computerized reporting system that went online in 2007 now allows better tracking of offenses and dispositions.



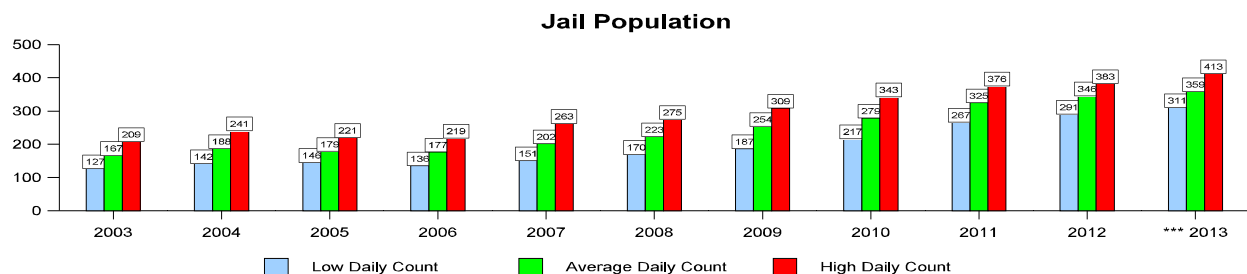
Jail Intake & Release

The workload of the Detention Facility has also risen over the last ten years. The number of persons arrested and booked into the jail significantly increased over the last several years. These increases have driven the inmate population to record levels.



Jail Population

The inmate population has risen to the point where the jail is beyond significantly overcrowded. The average jail population has increased and continues to rise. For 2012, the overall number of inmates held in jail has increased to where the daily population has averaged 346 inmates with a low of 291 and a high of 383.

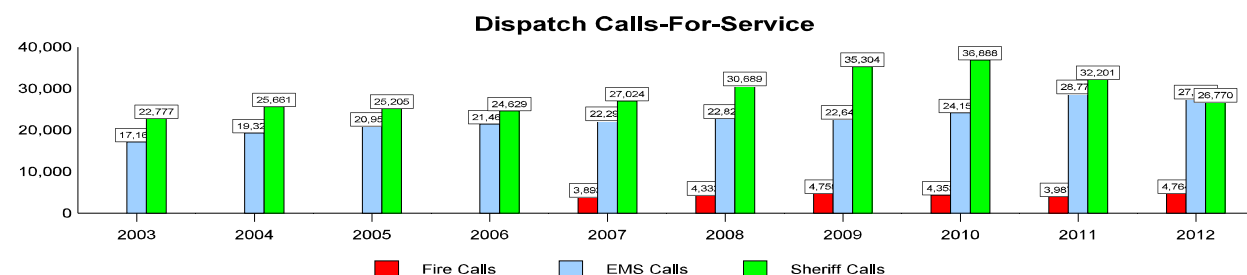


*** Through May 13, 2013

For the first five months of 2013, the jail population has increased to an average of 359 inmates with a low of 311 and a high of 413.

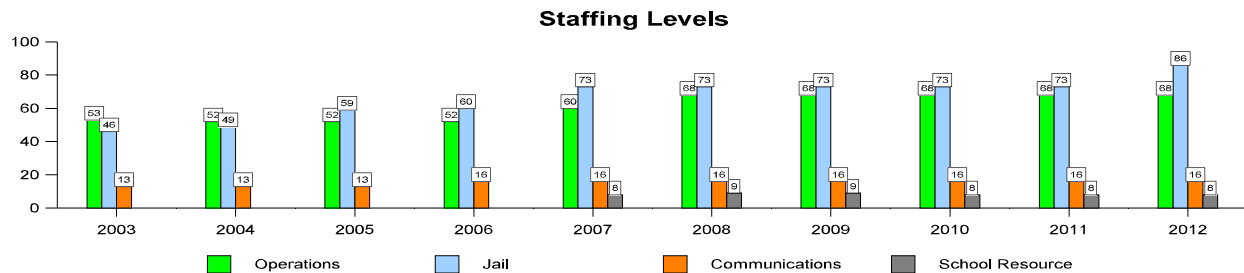
Dispatch Calls-For-Service

The workload of the Communications Unit has increased substantially over the last ten years. In 2001, the Sheriff's Communications Center consolidated with Anderson County EMS. Currently, the dispatch center handles all calls for the Sheriff's Department, Emergency Medical Services, the five county volunteer fire departments, and the rescue squad. The center receives all 911 calls from the unincorporated areas of Anderson County as well as the cities of Lake City, Norris, and Oliver Springs.



Staffing Levels

Staffing levels for law enforcement operations had not changed in many years. While the jail staffing increased, patrol, investigations, and other operations personnel had not increased to keep pace with the rise in calls-for-service and other activity. The first increase came in 2007. Staffing levels in the jail rose over ten years due to the ever increasing jail population and workload while personnel for operations increased only in 2007 and 2008. Dispatch staffing increased by only two in 2003 and three in 2006 despite significant increases in both law enforcement and EMS calls-for-service. Eight school resource officers were added in 2007 in cooperation with the Board of Education. Given the continued increase for all types of activity within the Sheriff's Department, the staffing levels are still below the number of personnel needed to provide a minimum level of law enforcement services.



In addition to increased staffing in 2007 and 2008, the Sheriff's Department has been restructured to be more efficient and effective. Increased emphasis on patrol operations, criminal investigations, and drug enforcement allows a direct approach in combating crime. Crimes are mapped to determine where and when they occur. A problem solving approach to burglaries and thefts has increased arrests and resulted in more crimes being solved. Enhanced computer software and issuing laptops has kept deputies out in the field instead of in the office writing reports.

However, given the overall workload the Sheriff's Department remains understaffed. The job of patrol deputies is not simply to answer calls but to provide proactive, preventative patrols of the rural areas of the county. The duties of serving civil and criminal process is mandated by law and must be done. Investigating crimes and other illegal activity is another required duty. Providing security to the courts and the judges is also required. Tasks such as transporting persons to mental health facilities, keeping the sexual offender registry, and providing crime statistics are but a few of the many other duties that are set forth by state law. Finally, operating the county jail and keeping prisoners is the most demanding and is also required by law. Added all together, these duties define a demanding and often overwhelming job.

For the Sheriff's Department to operate, adequate staffing must be in place. The duties and responsibilities of the Sheriff must be met as required by law. For the citizens of Anderson County, adequate law enforcement services are a must. These residents ask for, and are entitled to receive, proper police protection.